

**Northern Trust Bank**



100 2nd Avenue South  
St. Petersburg, FL 33701





DON'T LET THE VIEWS  
DISTRACT YOU!



LOCATION  
ST. PETERSBURG, FL



PROPERTY SIZE  
242,115 RSF



BUILDINGS  
2



FLOORS  
12, 4



FLOOR PLATE  
19,442 RSF



6 STORY  
PARKING GARAGE

# Welcome to CITY CENTER

City Center offers unmatched views of Tampa Bay and the downtown St. Petersburg skyline with its premiere waterfront location. The office complex features a soaring atrium lobby with a glass ceiling, Class A amenities, and will be undergoing dramatic multi-million dollar renovations.

## ■ Planned Renovations - 2024

- Waterfront Downtown St. Petersburg Location
- Fitness Center with Showers & Conference Room that Seats 60 People
- Full Time Lobby Concierge and On-site Property Management



# Property FEATURES



ONSITE  
CAFÉ



CONFERENCE  
FACILITY



LOBBY  
CONCIERGE



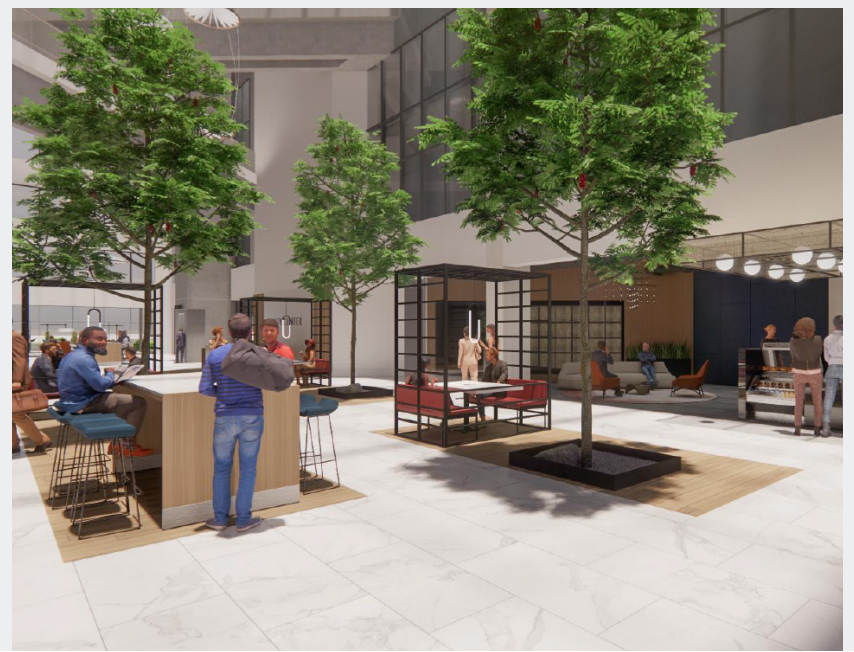
COMMON  
AREAS



FITNESS  
CENTER



WATERFRONT  
LOCATION





# Property FEATURES







UNIVERSITY OF  
SOUTH FLORIDA  
**1 MILE**



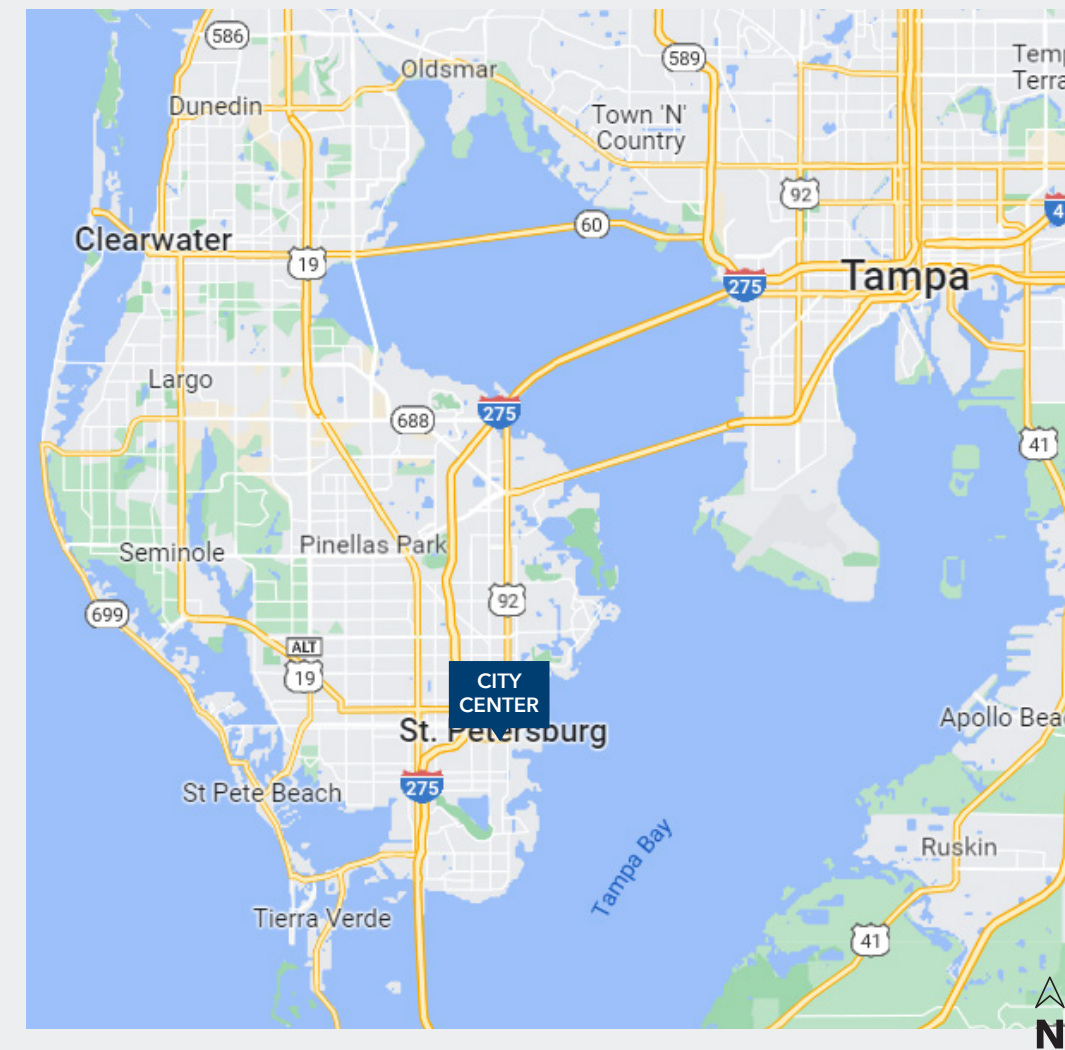
I-275  
**1 MILE**



AL LANG  
STADIUM  
**1 MILE**



ALBERT WHITTED  
AIRPORT  
**1 MILE**



RESTAURANTS  
500+, 5 MILES



HOTELS  
100+, 5 MILES



AL LANG STADIUM  
TROPICANA FIELD



APARTMENTS  
100+, 5 MILES





# Location HIGHLIGHTS

City Center is centrally located in Downtown St. Petersburg, with breathtaking views of Tampa Bay. The area offers a variety of activities and some of the most beautiful waterfronts in the country. Enjoy the sunny weather, bustling art scene and exciting nightlife in St. Petersburg.

## Nearby Points Of Interest

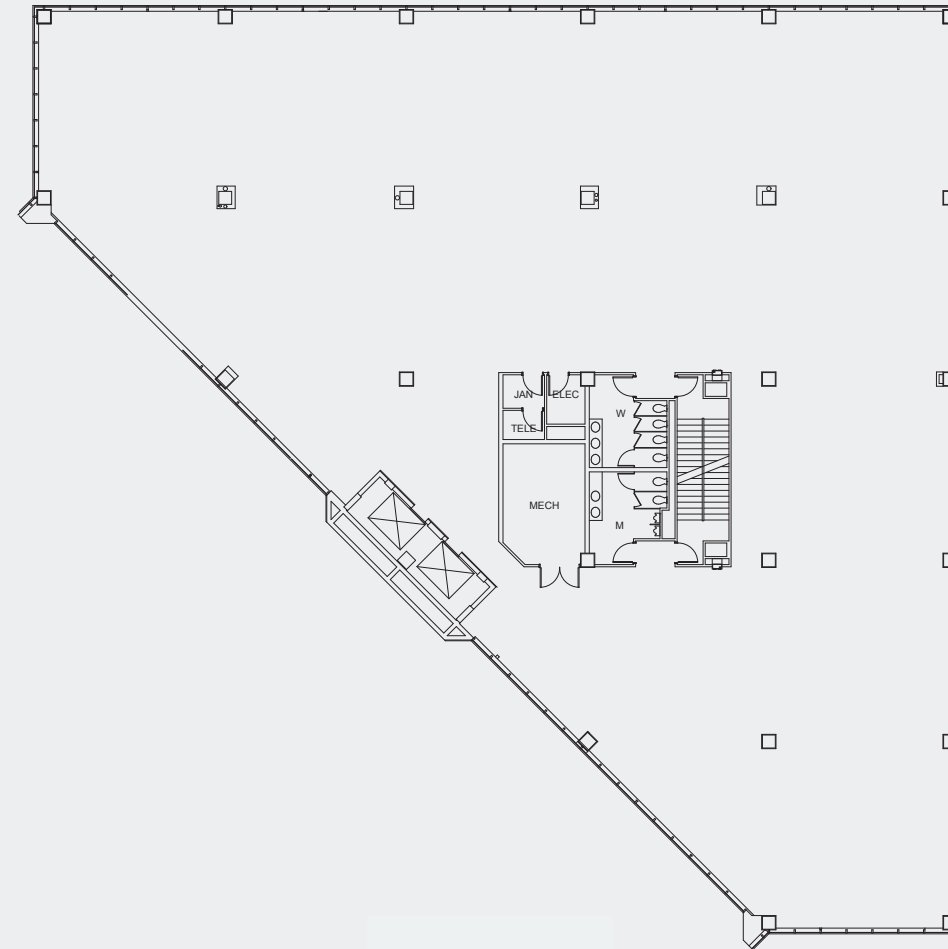
- St. Pete Pier
- Al Lang Stadium & Tropicana Field
- Albert Whitted Airport
- Boyd Hill Nature Park & Fort De Soto Park
- Salvador Dali Museum & Museum of Fine Arts
- Mahaffey Theater





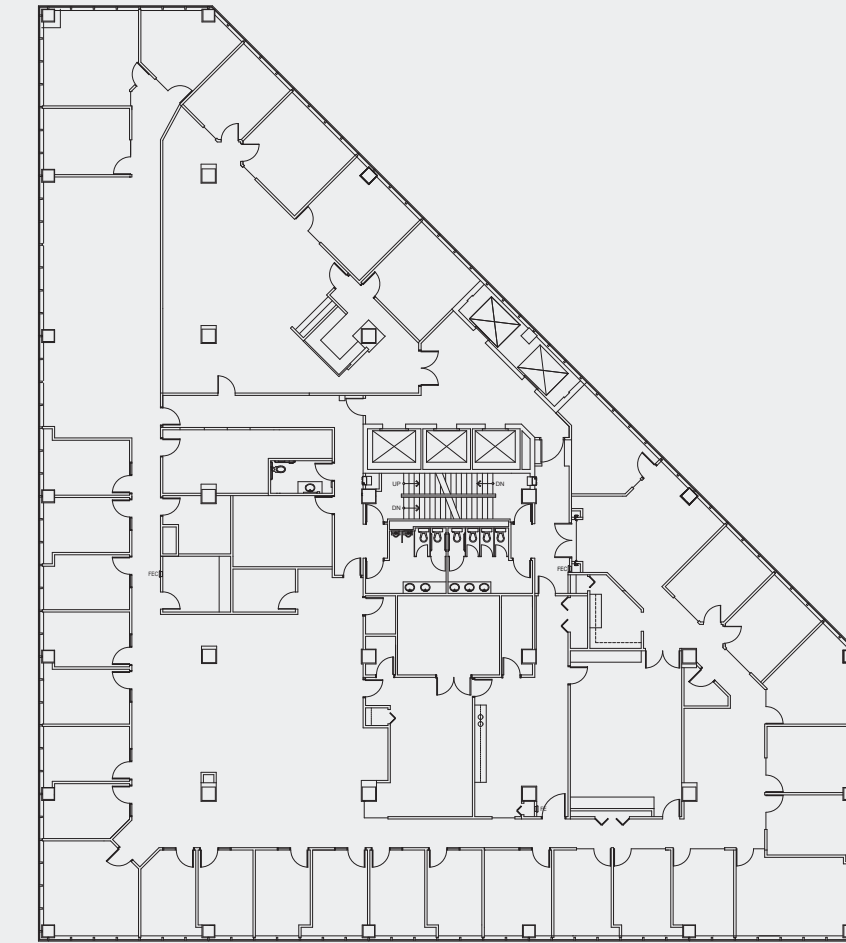
# Typical FLOOR

## North TOWER



NOT TO SCALE

## South TOWER



NOT TO SCALE



DON'T LET THE VIEWS DISTRACT YOU



BAHAREA LARSEN  
813.579.3934  
[blarsen@feldmanequities.com](mailto:blarsen@feldmanequities.com)

[Click For Available Spaces](#)  
[Click For Printable Brochure](#)



© Copyright 2022 | All Rights Reserved

