

Northern Trust Bank



100 2nd Avenue South
St. Petersburg, FL 33701



DON'T LET THE VIEWS
DISTRACT YOU!



LOCATION
ST. PETERSBURG, FL



PROPERTY SIZE
242,115 RSF



BUILDINGS
2



FLOORS
12, 4



FLOOR PLATE
19,442 RSF

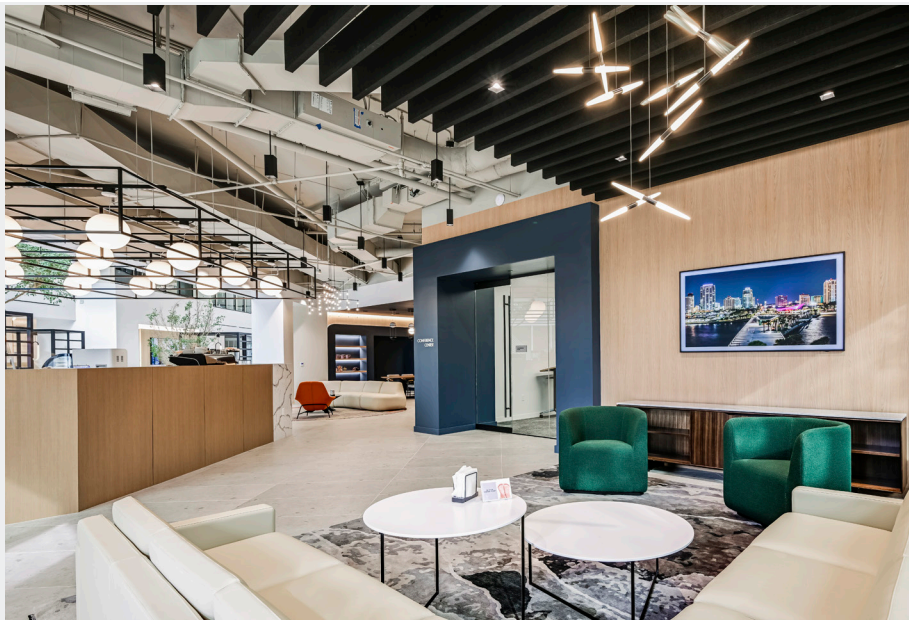
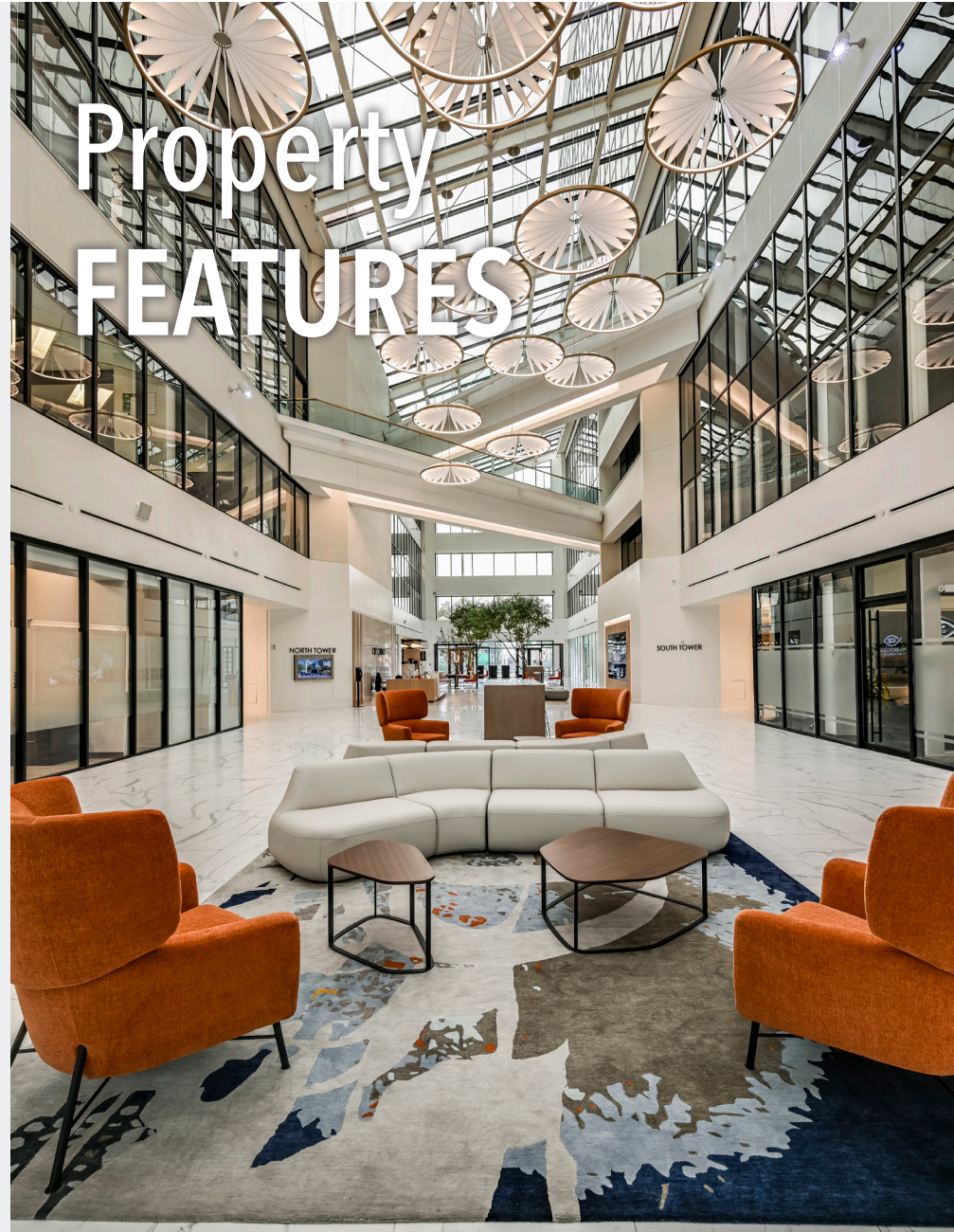


6 STORY
PARKING GARAGE

Welcome to CITY CENTER

City Center provides unmatched views of Tampa Bay and the downtown St. Petersburg skyline from its premiere waterfront location. This Class A building now boasts a fully renovated lobby, fitness center, café, tenant lounge and conference center.

- **Recently Completed Multi-Million Dollar Lobby and Amenity Renovations**
- Waterfront Downtown St. Petersburg Location
- On-site Café Serving Breakfast and Lunch
- Fully Equipped Fitness Center with Showers
- Conference Room with Seating for 60 People
- Full-Time Lobby Concierge and On-site Property Management



ONSITE
CAFÉ



CONFERENCE
FACILITY



LOBBY
CONCIERGE



COMMON
AREAS



FITNESS
CENTER



WATERFRONT
LOCATION



Property LOCATION

Tampa Bay

AIRPORT

**CITY
CENTER**

**USF
ST. PETE**

2nd Ave S

I-175

N



UNIVERSITY OF
SOUTH FLORIDA
1 MILE



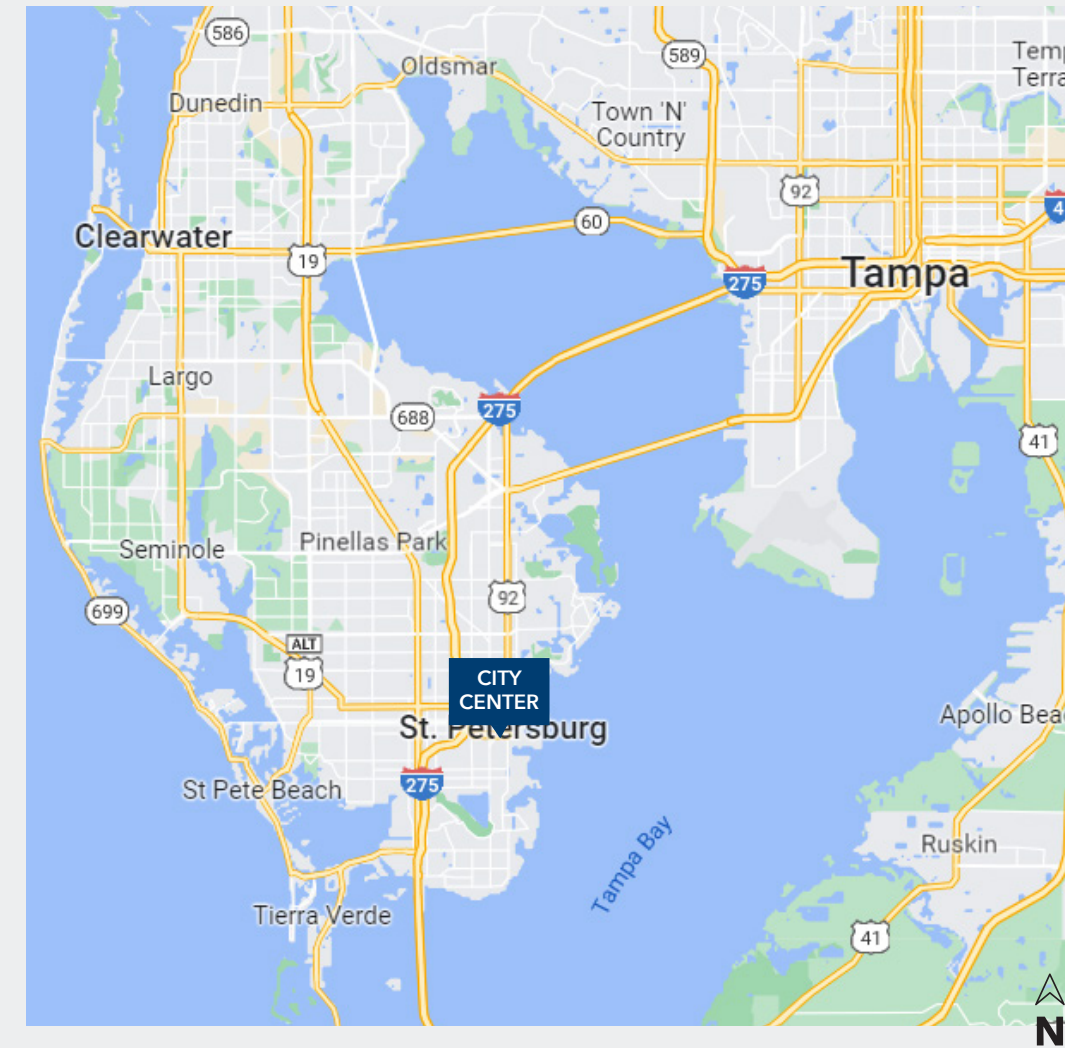
I-275
1 MILE



AL LANG
STADIUM
1 MILE



ALBERT WHITTED
AIRPORT
1 MILE



RESTAURANTS
500+, 5 MILES



HOTELS
100+, 5 MILES



AL LANG STADIUM
TROPICANA FIELD



APARTMENTS
100+, 5 MILES



Location HIGHLIGHTS

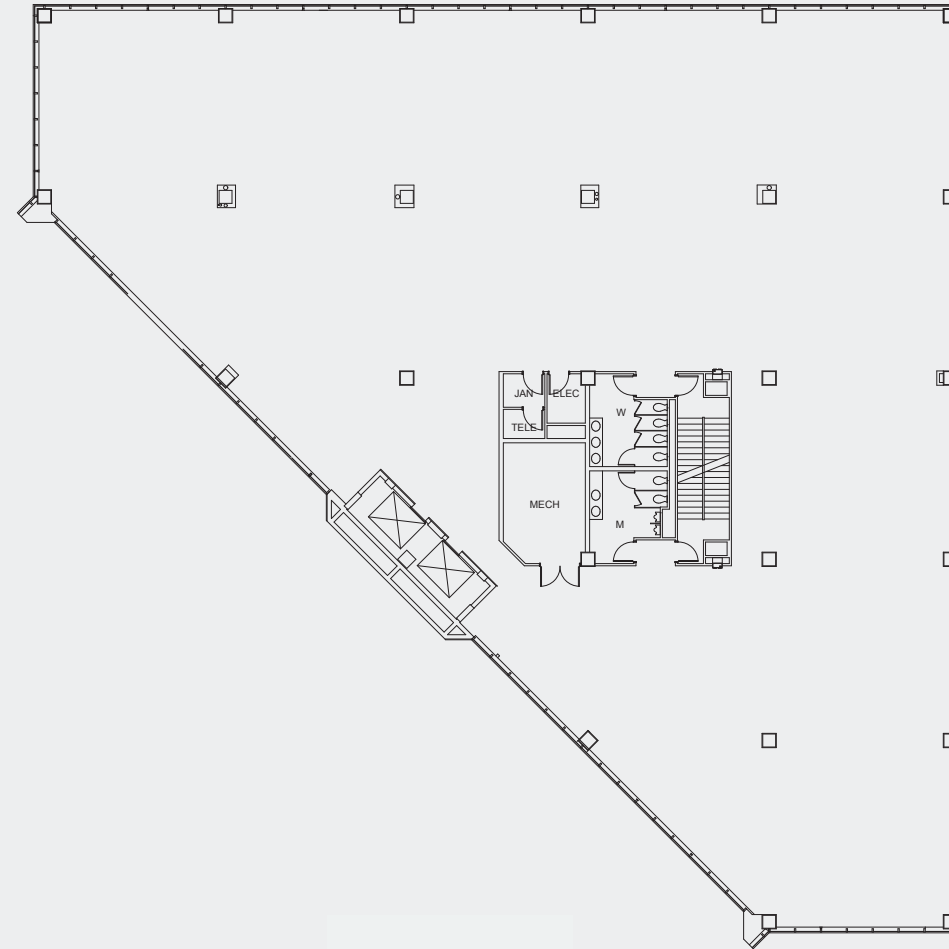
City Center is centrally located in downtown St. Petersburg, offering breathtaking views of Tampa Bay. The area features a wide range of activities and some of the most beautiful waterfronts in the country. Enjoy the sunny weather, vibrant art scene and exciting nightlife in St. Petersburg.

Nearby Points Of Interest

- St. Pete Pier
- Al Lang Stadium & Tropicana Field
- Albert Whitted Airport
- Boyd Hill Nature Park & Fort De Soto Park
- Salvador Dali Museum & Museum of Fine Arts
- Mahaffey Theater



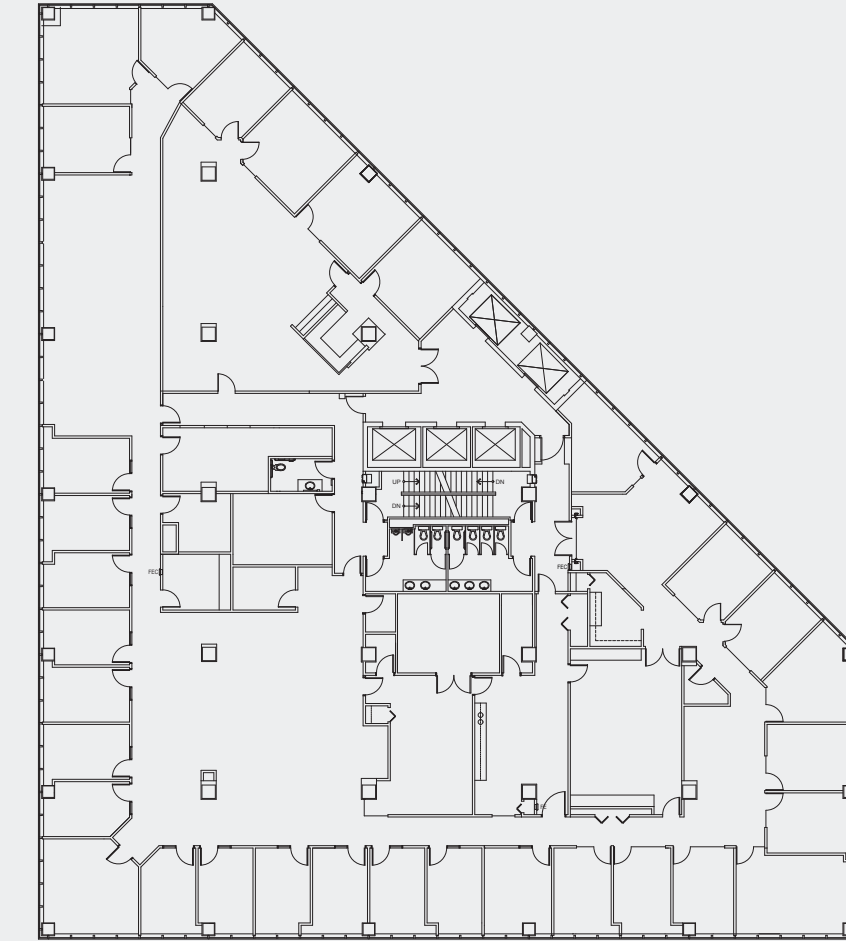
Typical FLOORPLATE



NOT TO SCALE

North TOWER

South TOWER



NOT TO SCALE

DON'T LET THE VIEWS DISTRACT YOU





BAHAREA LARSEN
813.579.3934
blarsen@feldmanequities.com

[Click For Available Spaces](#)
[Click For Printable Brochure](#)



© Copyright 2022 | All Rights Reserved

